

# Reveal® 3-D for Gliadin Procedure

Note: Please read kit instructions completely before performing test.

## Extraction: Rinses

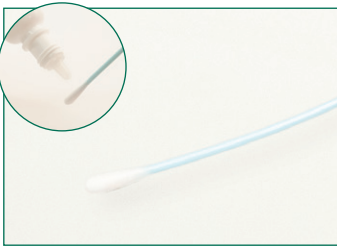


1. Add 0.25 mL of sample into an extraction buffer bottle.



2. Secure cap and shake for 1 minute.

## Extraction: Swabs



1. Gather the sample. *For dry surfaces moisten with swab wetting solution. Do not premoisten for wet surfaces.*



2. Insert the swab to the extraction buffer bottle and break off into the bottle.



3. Secure cap and shake for 1 minute.

## Sample Testing



1. Remove the lid and fill with liquid from the bottle.



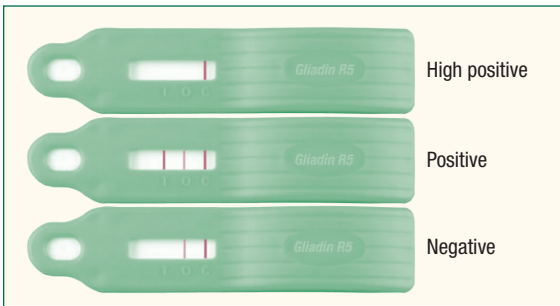
2. Dip the Reveal 3-D device into the liquid in the lid; ensure that the cavity is saturated with the liquid.



3. Leave the cavity saturated until the liquid is seen running into the test window.



4. Place the device on a flat surface and allow the test to develop for 5 minutes.



5. Interpret the results.

## Ordering information:

### 8519 Reveal 3-D for Gliadin

**Rinse:** 5–10 ppm

**Swab:** 2 µg/100 cm<sup>2</sup>

**Testing time:** 5 minutes

#### Materials Provided

20 test devices

20 bottles of extraction buffer

20 sterile swabs

1 bottle of swab wetting solution



620 Leshar Place • Lansing, MI 48912 • 800/234-5333 (USA/Canada) • 517/372-9200  
foodsafety@neogen.com • www.neogen.com

©Neogen Corporation 2013. Neogen and Reveal are registered trademarks of Neogen Corporation, Lansing, Mich.